

# Introducing S3BMS

S3BMS is a new platform for **fish-based communication**. S3BMS is a new international standard for short message communication which combines the **informational efficiency** of Morse code with the **semiotic flourish** of robotic-singing fish gesture. S3BMS was first designed with naval and military aircraft communication in mind, but it is easy to foresee its **popularity** in the consumer communication electronics marketplace.

S3BMS stands for "Short Big-Mouth Billy Bass Messaging System." Today millions of people are staying connected using SMS or "Short Messaging System" (also known as "texting"). **Mothers, grads, dads, kids**, and so many other kinds of today's savvy tech users have spoken: the SMS craze is on the rise! S3BMS takes that craze to the next level by giving your co-worker, friend, or loved one the ability to send you that short note to that says "**I'm here**" while adding the **personal touch** of robotic fish movement.

Whether you are an investor, military contractor, homemaker, entrepreneur, or rock and roll ensemble, we think you'll be **surprised** by what S3BMS has in store for **you**.



## How can I get started today?

**1** Talk to a S3BMS representative about S3BMS **investment opportunities**.

**2** Start **learning** GBL with our free GBL learning app.

**3** Send a friend a **bass message** right away!



### **S3BMS Development Director and Project Leader**

Chaz Evans  
chazevans@gmail.com  
chazevans.net

### **S3BMS Engineers**

Josh Albers  
Jonathan Chambers  
jesus duran

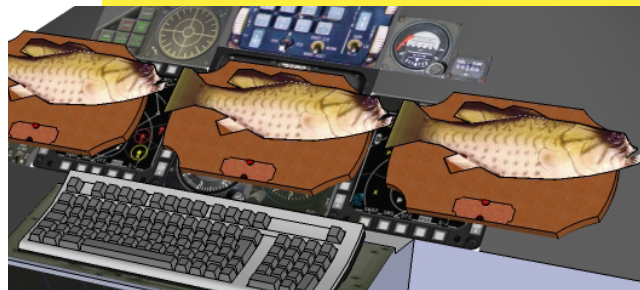
### **S3BMS Marketing Representatives**

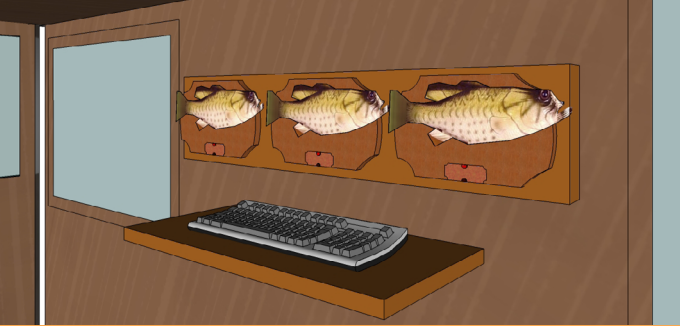
Kristina Carr  
Ben Kobold

Today's fish-based messaging leader in the USA.

**Tomorrow: the globe.**

Standardized usability.  
Privacy.  
Semiotic flourish.





## How does it work?

It's easy.

1. Press any letter or number on the standard QWERTY keyboard.
2. All connected S3BMS devices will return a specific fish-glyph (standardized by GBL specification 1.0).
3. Continue pressing keys, one at a time, to form a word or numeric sequence.
4. Once you have finished a word or numeric sequence pause for 1 second. This signifies that a space between words or numeric sequences has occurred.
5. Continue forming words and numeric sequences with pauses separating them until you have reached the end of your short message.
6. Then pause for 3 seconds. This signifies that your message is complete and your friend, co-worker or loved one can begin sending their own bass-message.
7. Please observe good GBL etiquette and do not press any keys while you are receiving a message. Key interruption can cause delays and general fish-message confusion.

Providing gestural fish communication

world wide.

**Circumnavigating linguistic comprehension** is the first and very best safeguard for **privacy**, whether it be in the home, office, or online. With S3BMS you can rest assured that the information you send and share is **safe and secure**. After all, anybody who hasn't taken the time to learn every alpha-numeric fish-glyph of GBL can't **possibly understand** the things you have sent, let alone try to profit from it or track you in any way.

*That's what we call "inherent privacy."*

### GBL Master Key

1 = Left Fish  
 2 = Center Fish  
 3 = Right Fish  
 H = Head gesture  
 M = Mouth gesture  
 T = Tail Gesture

A 1:M 2:0 3:0  
 B 1:M 2:M 3:0  
 C 1:M 2:M 3:M  
 D 1:0 2:0 3:T  
 E 1:0 2:T 3:T  
 F 1:T 2:T 3:T  
 G 1:0 2:0 3:M  
 H 1:0 2:M 3:M  
 I 1:0 2:M 3:0  
 J 1:M 2:0 3:M  
 K 1:T 2:0 3:0  
 L 1:T 2:T 3:0  
 M 1:0 2:T 3:0

N 1:T :2:0 3:T  
 O 1:MT 2:0 3:0  
 P 1:MT 2:MT 3:0  
 Q 1:MT 2:MT 3:MT  
 R 1:0 2:0 3:MT  
 S 1:0 2:MT 3:MT  
 T 1:0 2:MT 3:0  
 U 1:MT 2:0 3:MT  
 V 1:M 2:M 3:MT  
 W 1:T 2:T 3:MT  
 X 1:MT 2:M 3:M  
 Y 1:MT 2:T 3:T  
 Z 1:M 2:MT 3:M  
 0 1:T 2:H 3:T  
 1 1:H 2:0 3:0  
 2 1:H 2:H 3:0  
 3 1:H 2:H 3:H  
 4 1:0 2:0 3:H  
 5 1:0 2:H 3:H  
 6 1:0 2:H 3:0  
 7 1:H 2:0 3:H  
 8 1:M 2:T 3:H  
 9 1:H 2:M 3:T



## What is GBL?

**GBL (Gestural Bass Language)** is the standardized visual symbolic lexicon which translates alphabetical and numerical symbols into **unique combinations of fish-movements** of the head, mouth, and tail. GBL is specifically designed for use with genuine S3BMS devices. GBL is an **open-standard** and will grow to include more specific communicative symbols over time, depending on the needs of the S3BMS user-base. If you want a specific fish-glyph to be incorporated into the next specification of GBL (current specification 1.0) **let your voice be heard!**

Building upon on some of the world's most **popular languages** like Morse code and nautical flag semaphore, Gestural Bass Language (used over genuine S3BMS devices) advances **peer-to-peer** communication with the aplomb of motorized fish.

The sooner you are familiar with each standardized **fish-glyph** (one for each alpha-numeric character) the sooner **you'll be ready** for when your family or business implements a S3BMS system near you.